

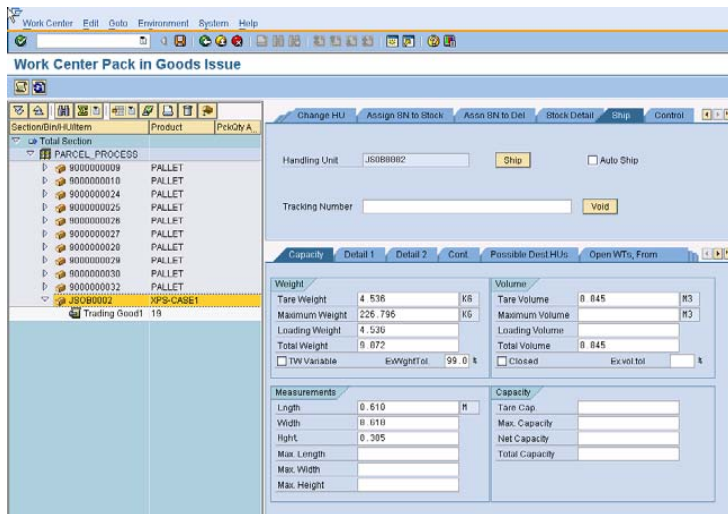


# Catalyst XPS: Parcel Shipping Within SAP® ECC and SCM EWM

Small parcel shipping solution within SAP ECC and SCM EWM via Catalyst XPS

SAP SCM Extended Warehouse Management (EWM) solution is the next generation SAP Warehouse Management System (WMS) platform designed to provide a complete suite of operational functionality. However, many companies implementing SCM EWM are still faced with a significant challenge of finding a native-SAP-based small parcel shipping solution that will work seamlessly within both SCM EWM, and their overall SAP ecosystem. This is primarily due to the fact that third-party shipping solution providers currently do not have access or first-hand experience working with SCM EWM.

Catalyst has extended our current parcel shipping solution from SAP ERP Central Component (ECC) to the SCM EWM environment; providing companies with one global enterprise small parcel shipping solution for the SAP ECC and SAP SCM EWM environments; enabling companies to take advantage of the latest warehouse management solution from SAP (SCM EWM) and state-of-the-art small parcel shipping solution (Catalyst XPS) within the SAP Ecosystem.



XPS shipping screen in EWM, integrated with packing work center

## BENEFITS

- A built-in, not bolt-on solution within existing SAP Ecosystem, eliminating middleware like XI, Business Connector, webMethods
- Complete carrier compliancy - Fully integrated and compliant with all major parcel carriers
- Integrated manual and non-SAP shipping process for complete transportation picture
- Rate shopping to optimize freight savings
- Delivery consolidation to reduce paperwork, shipping units and to further save the freight expenditure
- Freight and service auditing to eliminate dependency on 3rd party companies
- Communication with scale/Scanner without any middleware
- Customer service/sales team: more visibility, proactive action and response, reduced communication between shippers and sales team
- Use of shipping from anywhere in the warehouse or office
- Less user training: process standardization
- End-to-end visibility from within SAP ecosystem in the complete supply chain

## PRIMARY CHALLENGES

- **Technical Architecture:** There are many technical challenges integrating the various solution components within the SCM EWM environment. In terms of product technical architecture, SCM EWM is very different than the SAP ERP/ECC environment. Traditionally, non-SAP third-party shipping software providers utilize BDC updates or SAP table look-ups to integrate their solution with SAP ERP/ECC. However, these integration approaches are not available with SCM EWM environment and require specialized skill sets to navigate within the system primarily because:
  - SCM EWM is based upon more object oriented ABAP and requires knowledge of the ABAP classes and methods.
  - The database tables in SCM EWM are organized differently from ERP/ECC and introduction of GUID identifier increases complexity.
  - SCM EWM screens do not lend themselves to BDC updates.

## PRIMARY CHALLENGES

- *SAP SCM EWM – Limited Resource Pool and Live Customers:* SCM EWM is a newer platform and there are limited reference companies. Additionally, there are only a handful of SAP partner consulting companies that have experience in implementing SCM EWM. Catalyst is one of the leading SCM EWM implementation partners. Traditionally, third-party shipping software providers have not had the necessary skills to implement and integrate within the SCM EWM environment, making it a very difficult and risky proposition for companies to implement such solutions with their SCM EWM landscape.

## THE SOLUTION

Catalyst XPS is fully developed in the native SAP program language and provides an easy to manage, centralized view of all packing and shipping processes, across multiple distribution centers and multiple carriers. It is a 'built-in' application - not a 'bolt-on'. It exists within the SAP ecosystem, eliminating the need for middleware and offering complete carrier compliancy with all major parcel carriers.

Catalyst XPS resides within SAP and can manage all third-party carrier management from a single system and from the existing IT infrastructure. It also removes the need for additional databases and additional IT support resources for non-SAP systems. Catalyst XPS avoids the need for developing and supporting specific middleware between SAP and the third-party carrier systems. It creates a direct communication between SAP and the carrier systems,

XPS Within ERP -- Features	XPS Within SCM EWM -- Features
<p>Planning</p> <ul style="list-style-type: none"> <li>• Rate Shopping</li> </ul> <p>Execution</p> <ul style="list-style-type: none"> <li>• Enhanced Packing UI</li> <li>• Small Parcel Shipping Operations</li> <li>• LTL Framework</li> <li>• End of Day Close</li> <li>• Manual Shipping</li> </ul> <p>Monitoring</p> <ul style="list-style-type: none"> <li>• Integrated Track and Trace using SAP XSI</li> <li>• Invoice Matching/Freight Auditing</li> <li>• Shipping/Freight Reporting</li> </ul>	<p>Planning</p> <ul style="list-style-type: none"> <li>• Rate Shopping</li> </ul> <p>Execution</p> <ul style="list-style-type: none"> <li>• Packing with SCM EWM Packing Work Center</li> <li>• Small Parcel Shipping Operations</li> <li>• LTL Framework</li> <li>• End of Day Close</li> <li>• Manual Shipping (Direct OBD Order)</li> </ul> <p>Monitoring</p> <ul style="list-style-type: none"> <li>• Interface of Track &amp; Trace using SCM EWM ESI</li> <li>• Freight Charge information back to ERP</li> </ul>

- Implementation of XPS for an SCM EWM warehouse will include both ERP/ECC and EWM components
- ERP/ECC system will be used for Planning and Monitoring:
  - Planning and Monitoring functions will reside in ERP/ECC system
  - Execution functions will be available in ERP/ECC system for non-EWM shipping locations
  - Execution of parcel and LTL shipping will occur from SAP SCM EWM
  - Shipping transaction details (rate, tracking number, accessorial charges, etc.) will interface from SCM EWM to ERP/ECC
  - Tracking status updates will occur in the ERP/ECC system

## CATALYST'S SAP LES EXPERIENCE

For more than 12 years, Catalyst has focused on designing and implementing world class SAP Supply Chain Execution Solutions that enable clients to gain operational efficiencies and reduce and manage the costs related to supply chain operations. With over 200 SAP clients and close to 1,500 live sites, Catalyst's experience and expertise with SAP's suite of Supply Chain Execution applications is unparalleled in the industry. Catalyst is a key SAP Partner focusing on the Logistics Execution System (LES) and Supply Chain Execution components of the SAP Application Suite. Customers with sites based throughout the world have expressed confidence in Catalyst's abilities to help them optimize their to help them optimize their supply chains and ensure they receive well executed, high-performance SAP logistics solutions. Catalyst has a very close working relationship with SAP, which it uses to ensure customers running on SAP platforms benefit from enhanced product functionality and performance. The company delivers full SAP LES implementation services and exploits its world-wide presence and proven delivery methodologies to ensure consistent, comprehensive and reliable service for all its customers.



US Corporate Headquarters 484.636.3000  
 European Headquarters +44 (0) 1604 614 147  
[www.catalystwms.com](http://www.catalystwms.com)



Catalyst is a services  
 business of CDC  
 Global Services